

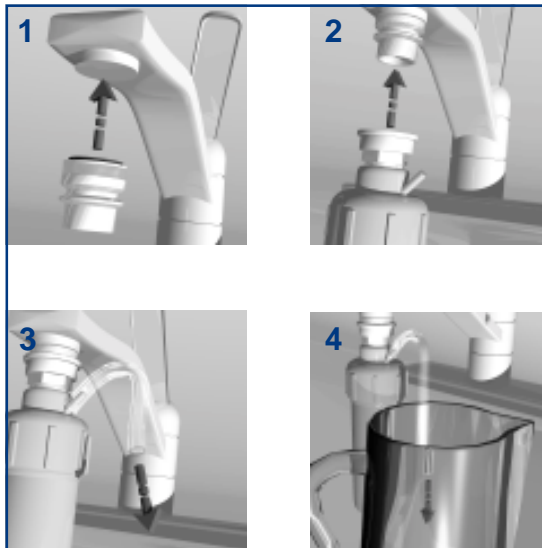
WaterMaker^{MINI}

Faucet Mounted Reverse Osmosis System



| Replacements | Part # |
|---|--------|
| Replacement Membrane Filter | 104467 |
| Post Carbon Filter with Support Ring Assembly | 104127 |
| Post Carbon Filter, 2-pack | 104036 |
| Support Ring | 101083 |

- Simple to Use**
 The WaterMaker Mini is the original faucet-mounted reverse osmosis system.
- No permanent plumbing connection required**
 Most people connect the WaterMaker Mini at night and, in the morning, they have enough fresh water for the day.
- 10 gallons of great tasting water per day**
 The reverse osmosis membrane in the WaterMaker Mini is activated by the pressure from your kitchen tap. The WaterMaker Mini will produce up to eight gallons of fresh water every day.
- Reduces Total Dissolved Solids**
 The WaterMaker Mini removes 93% of all dissolved solids such as salts and hardness.
- Reduces Microbiological Contaminants**
 The WaterMaker Mini removes 99.97% of Cryptosporidium and Giardia.
- Reduces Chlorine Taste and Odor**
- Complete System**
 Includes replacement aerator, quick-connect fitting for easy removal and storage, and a length of tubing for product water delivery.



Faucet Mounted Reverse Osmosis System *Typical Installation*

Installation

Step 1: Remove the aerator from the kitchen faucet.

Step 2: Install the aerator furnished with your unit. See *Fig. 1*.

Step 3: Remove and discard the protective cap. While holding down the white lock-ring on the unit, place the top over the end of the new aerator. Release the lock-ring. The unit will clamp into place. See *Fig. 2*. A slight downward tug on the entire assembly will confirm the connection.

Step 4: Remove the small protective cap from the stainless steel tube near the top of the unit and attach the plastic tubing as shown in *Fig. 3*. Fresh water will drip from this tube. Collect it by directing the tube into a pitcher or other container. Place the container in the sink to catch any overflow. *Fig. 4*.